



ALBERT BLOCH

a retrospective exhibition of
his work from 1911 to 1955

The University of Kansas Museum of Art,
Lawrence, Kansas

September 15 to October 30, 1955

Inspired by the growing interest in this country for the work and the historical importance of the several "groups" of German painters, formed during the first decades of this century, and by the fact that a member of the artistic community of the University of Kansas had had some connection with them, it was proposed to Albert Bloch, Professor-emeritus of Drawing and Painting at the University, who, in his youth, had been a friend and associate of such men as Franz Marc and Wassily Kandinsky, that a retrospective exhibition of his work be held at the Museum during 1955. Finding him agreeable to such an undertaking, he was invited to write an introduction to the catalogue as well. Although this seemed much more difficult, it was not impossible, and he presented us with an introduction in the form of a letter from which we were to quote. It was decided, however, to reproduce it in its entirety, for it expresses better than can any other sort of commentary, something of the spirit of the artist. It may also be considered a not unimportant document related to the history of both German and American painting of the twentieth century.

EDWARD A. MASER
Director, Museum of Art

Catalogue of the Exhibition

With a few exceptions, the paintings are arranged in chronological order, starting at the left of the gallery entrance, continuing on the right side of the gallery into the adjacent room, where the most recent works are displayed.

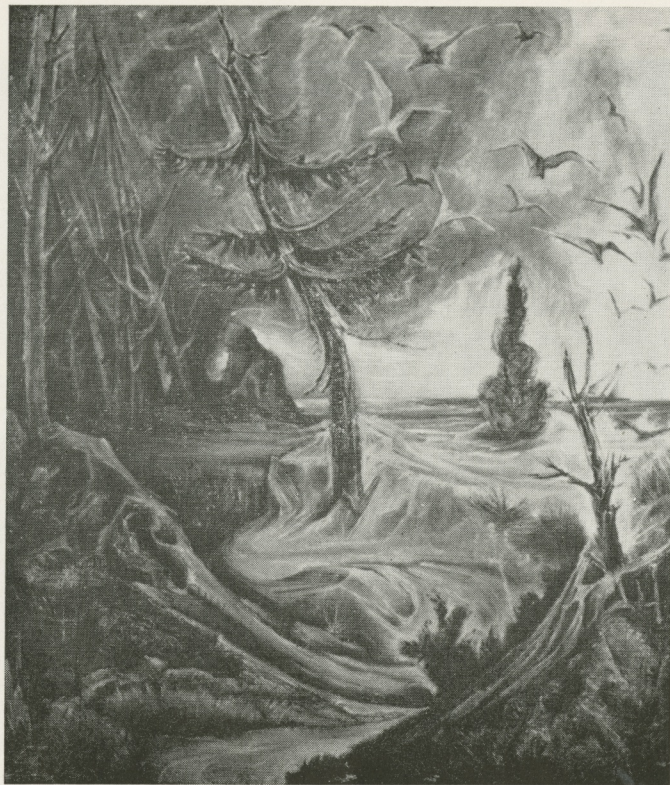
Unless otherwise indicated the paintings are in oil on canvas and have been lent by the artist. Their measurements are in inches, height preceding width. Certain of the paintings are for sale. Prices will be furnished on request.

The Museum wishes to thank the following for their assistance in organizing this exhibition: the various lenders whose names are noted in the catalogue; Mr. and Mrs. Arthur Wolf and the firm of Mosser-Wolf, who provided photographs for reproduction; Anna Francis Bloch for her aid in compiling the data on the paintings; Prof. A. Dwight Burnham and Prof. Robert Sudlow for technical advice in the installation of the exhibition.

1. FACTORY CHIMNEY, 1911 (22x15 $\frac{3}{8}$)
2. PIPING PIERROT, 1911 (31 $\frac{1}{2}$ x39 $\frac{1}{2}$)
3. TRAMPS, 1913 (25 $\frac{5}{8}$ x18 $\frac{3}{8}$)
4. HARLEQUIN WITH THE THREE PIERROTS,
1914 (40x53 $\frac{3}{8}$)
Lent by the Art Institute of Chicago, the Arthur
Jerome Eddy Memorial Collection.
5. GREEN HILLSIDE, 1916 (25 $\frac{1}{2}$ x18 $\frac{1}{2}$)

6. STILL LIFE, 1918 ($19\frac{3}{4} \times 25\frac{5}{8}$)
7. VERANDA (Ascona) 1920 ($18 \times 21\frac{1}{8}$)
Oil on pasteboard.
Lent by the Columbus Gallery of Fine Arts, Columbus, Ohio. The Ferdinand Howald Collection.
8. WINTER, 1924 (24×20)
9. THE FOUNTAIN, 1924 (26×32)
Lent by Mrs. E. F. Schmitz, St. Louis, Missouri.
10. FANTASY IN YELLOW, 1926 ($23\frac{5}{8} \times 35\frac{5}{8}$)
11. THE FROZEN WOOD, 1934 ($24\frac{1}{8} \times 30\frac{1}{8}$)
Lent by Mr. and Mrs. Granville C. Fairchild, Philadelphia, Pa.
12. DESOLATE LANDSCAPE, 1934-46 (36×24)
13. VIGIL, 1936 ($36\frac{7}{8} \times 30$)
14. IN THE NIGHT, 1936 (40×36)
15. WINTER LEGEND, 1937-46 (32×36)

16. FLOWER IMPROMPTU, 1938 (18x22)
17. FLORIST'S WINDOW, 1939 (12x24)
Lent by Mr. and Mrs. Arthur Wolf, Lawrence.
18. OLD GRAVEYARD, 1940 (26x22)
19. GULLS, 1941 (32x36)
20. THROUGH THE NIGHT, 1942 (40x36)
21. THE BLIND MAN, 1942 (36x40)



GULLS

1941

22. WINDY NIGHT SKY, 1944 (36x32)

23. THE FALL, 1945 (20x24)

24. SHINING NIGHT, 1945 (24 $\frac{3}{4}$ x24 $\frac{1}{8}$)
Oil on pressboard.

25. SUMMER MOONLIGHT, 1946 (27 $\frac{1}{4}$ x25 $\frac{7}{8}$)

26. DIVERTISSEMENT, 1946 (25x28)
Oil on pressboard.

27. SEEKER IN THE NIGHT, 1947 (40x32)

28. PASTORALE, 1948 (35 $\frac{5}{8}$ x20 $\frac{1}{8}$)

29. LUMINOUS NIGHT, 1948 (36 $\frac{1}{8}$ x30)

30. CROWS, 1948 (20x18)

31. SNOW AND STARS, 1949 (19 $\frac{3}{8}$ x14 $\frac{1}{8}$)

32. ALTAR STONE AT NIGHT, 1950 (28x24)

33. FLOWER FANTASY, 1950 (20x18)

34. THE GRIEVING WOMEN, 1950 (36x30)
35. VISION IN A SUMMER NIGHT, 1950-51 (36x40)
36. THE COLORS OF SUNDAY, 1951 (28x24)
37. MINE EYES HAVE SEEN, 1951 (36x30)
38. THE BLUE BOUGH, 1952 (25x30)
39. MISTY MOONLIGHT, 1953 (30x25)
40. APOTHEOSIS, 1953 (20x18)
41. LANDSCAPE, GREEN AND BLUE, 1954
(18 $\frac{3}{8}$ x14 $\frac{7}{8}$)
42. STILL LIFE IN A LANDSCAPE, 1954 (25x12)
43. GARDEN DOWNPOUR, 1954 (26x30)
44. CREATION: THE BIRDS, 1954-55 (35x28)
45. JUDAS, 1955 (38 $\frac{3}{8}$ x41 $\frac{1}{2}$)